

- Before using this product, the user must read and understand this document.
- For additional information regarding this product, refer to the product's user guide and technical specifications for the [MJ20-PRG](#).
- All examples and diagrams are intended to aid understanding, and do not guarantee operation. Unitronics accepts no responsibility for actual use of this product based on these examples.
- Please dispose of this product according to local and national standards and regulations.
- Only qualified service personnel should open this device or carry out repairs.



Failure to comply with appropriate safety guidelines can cause severe injury or property damage.



- Do not attempt to use this device with parameters that exceed permissible levels.

### Environmental Considerations



- Do not install in areas with: excessive or conductive dust, corrosive or flammable gas, moisture or rain, excessive heat, regular impact shocks or excessive vibration.

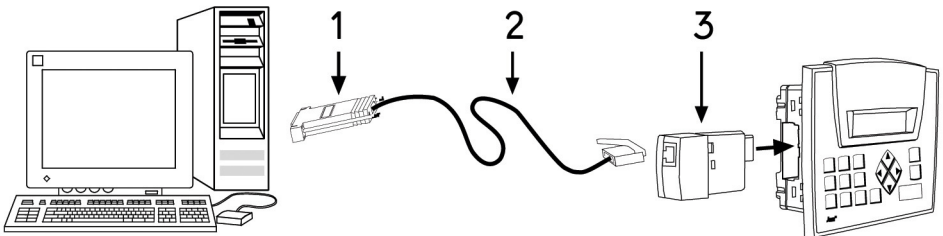


- Do not place in water or let water leak onto the unit.
- Do not allow debris to fall inside the unit during installation.

### Kit Contents

The numbered elements in the next figure are described in this section.

- 1 [MJ10-22-CS10](#)  
D-type adapter, interface between the PC serial port and programming cable.
  - 2 [MJ20-CB200](#)  
6-wire programming cable, two meters long. Use this to connect the PC serial port to the Jazz Programming Add-on Port, via adapter MJ10-22-CS10.
  - 3 [MJ20-PRG](#)  
RS232 Programming Add-On Port. Insert this into the Jazz Jack, to provide the serial interface for the programming cable.
- [CD \(not pictured\)](#)  
Contains application programming software, software utilities, and technical library, including technical specifications for the MJ20-PRG.



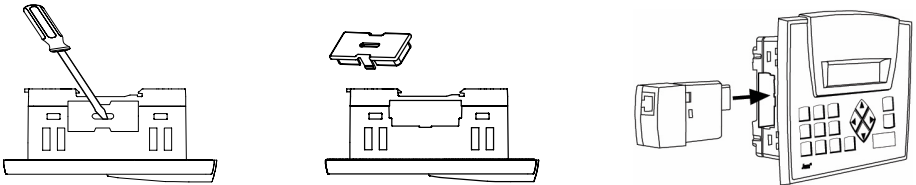
## About the RS232 Programming Port

The port enables an RS232 communication link with a Jazz series OPLC. This link enables:

- PC-PLC communications
- Application program download into the OPLC
- RS232 communications with devices that supply active (RS232 positive voltage) DTR and RTS signals, such as most modems. Note that modems require an appropriate adapter.

## Installation and Removal

1. Remove the cover from the Jazz jack as shown in the first two figures below.
2. Position the port so that the port's pin receptacles are aligned with the pins in the Jazz jack as shown in the third figure below.
3. Gently slide the port into the jack.
4. To remove the port, slide it out, and then re-cover the Jazz jack.



## Pinouts

The pinout below shows the signals between the adapter and port.

MJ10-22-CS10 D-type adapter			MJ20-PRG RS232 Programming Port		RJ11 MJ20-PRG – cable interface
Pin #	Description		Pin #	Description	
7	RTS	→	1	RS232 Power in*	
5	GND	—	2	GND	
2	RXD	←	3	TXD	
3	TXD	→	4	RXD	
5	GND	—	5	GND	
4	DTR	→	6	RS232 Power in *	

\* Note that active RS232 positive voltage signals are required to ensure proper communications.

Under no circumstances will Unitronics be liable or responsible for any consequential damage that may arise as a result of installation or use of this equipment, and is not responsible for problems resulting from improper or irresponsible use of this device. No part of this document may be used for any purpose other than for the purposes specifically indicated herein nor may it be reproduced or transmitted in any form or by any means, electronic or mechanical, including photocopying and/or recording, for any purpose without written permission from Unitronics. The information appearing in this document is for general purposes only. Unitronics makes no warranty of any kind with regard to the information appearing in this document, including, but not limited to, implied warranties of merchantability and/or fitness for a particular use or purpose. Unitronics assumes no responsibility for the results, direct and/or indirect, of any misuse of the information appearing in this document nor for any use of the Unitronics products referred to herein in any manner deviating from the recommendations made in this document. Unitronics assumes no responsibility for the use of any parts, components, or other ancillary appliances including circuitry other than as recommended hereunder or other than that embodied in the Unitronics product. Unitronics retains all rights to its proprietary assets including, but not limited to its software products which are copyrighted and shall remain the property of Unitronics. Copyright protection claimed includes all Forms and matters of copyrightable materials and information legally allowed including but not limited to material generated from the software programs which are displayed on the screen of the Unitronics products such as styles, templates, icons, screen displays, looks, etc. Duplication and/or any unauthorized use thereof are strictly prohibited without prior written permission from Unitronics. All brand or product names are used for identification purpose only and may be trademarks or registered trademarks of their respective holders. Unitronics reserves the right to revise this publication from time to time and to amend its contents and related hardware and software at any time. Technical updates (if any) may be included in subsequent editions (if any). Unitronics product sold hereunder can be used with certain products of other manufacturers at the user's sole responsibility.